

General Ledger

ACCOUNTING DATA INTEGRATION WITH ENDLESS POSSIBILITIES

Vadim's iCity General Ledger module is specifically designed for Municipalities and Local Governments with full integration to Vadim's iCity modules. This provides a solid foundation to a complete solution while the integration facilitates independent departmental workflow. The module provides reporting and exporting features that support both internal and external requirements, compliant with Government regulations. It simplifies data entry, inquiries and reviews and creates reports that retrieve important financial information quickly and easily. The on-screen displays of transactions and balances, detailed reports, balance sheet reports and a summary report of transactions makes the system user friendly and easy to learn.



Financial Statements

The Financial Statement program within the General Ledger allows for the creation of specialized Financial Statements for the various interest groups within an organization. Actual and budgeting data can be formatted into report columns, calculations can be defined for the columns and a large variety of data selection and grouping options are available in order to tailor each report for its target audience.

KEY SYSTEM FEATURES

- Ability to change chart of accounts and retain old account history eases transitions while remaining adaptable to new data
- Allows for regular, recurring or fixed journal entries which provides flexibility
- Supports actual, budgeted and committed value accounting
- Menu & account level security features gives tiered access for department and employee levels, making this a secure and usable system for all
- A context sensitive help system provides universal assistance
- Account management that offers recoding, cross referencing and termination by date
- Online user-defined, graphical and object-based inquiry tools allow further customization, giving you a product that is specific to your needs
- GST/HST remittance reporting

ABOUT VADIM

Vadim Software develops innovative, integrated financial, municipal, asset and utility management software for Municipalities, Local Governments and Utility Companies. Founded in 1975, Vadim has been dedicated to this market for over 37 years.

ICITY ENTERPRISE

iCity provides you with the core software modules you need to run your organization efficiently, including Financial Systems, Payroll & HR, and extended Municipal Systems like Property Taxes, Utilities, Cash Receipting and more.

IT INFRASTRUCTURE SERVICES

Your Information Technology (IT) department may be big or small, or you may not have one at all. Either way, our Network Services Team is available to take care of your technical needs and help your organization run smoothly.

Services include: Kit Installation, Server Tune-Ups, Managed Hosting, Infrastructure Consulting, Server Migration and Disaster Recovery.

APPLICATION SERVICES

The depth of skill and experience of our team allows us to assign staff according to expertise depending on your specific needs.

Services include: Customized Training, Project Management, iCity Optimization, Data Conversion, Third Party Integration and Development Services.

For more information on our products and services, please visit us online at www.vadimsoftware.com

THE POWER OF INTEGRATION BETWEEN ICITY MODULES AND THIRD PARTY SOFTWARE

- Allows import of data from third party software applications
- Ability to print reports directly to PDF format
- Database supports concurrent work in multiple periods/years
- Supports multiple year budgets
- Flexible Chart of Accounts - supports up to 43 digits
- Built-in comprehensive reporting for all accounting requirements - summary or detail
- Retains full cheque and deposit history for multiple years
- Automated inter-fund journal entries

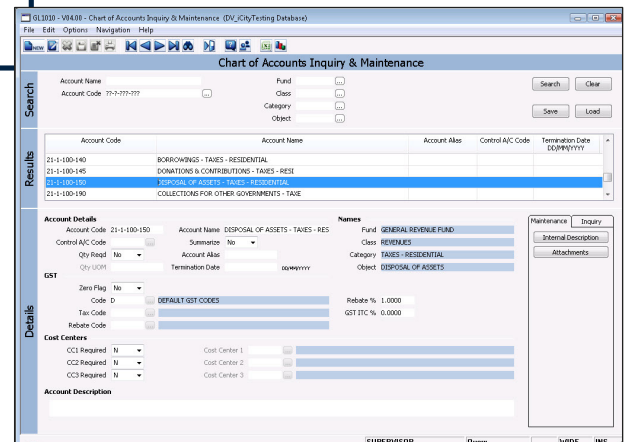
Budgeting

The Budgeting program within the General Ledger assists in the preparation and documentation of budgets. This program provides for transactional detail to support the total budget amount as well as provides a full "What If Analysis" by account or range of GL accounts. Budgets can be imported and exported into an Excel spreadsheet.



DIRECTLY INTEGRATED WITH

All iCity modules



Western/Head Office
Landmark Technology Centre
#400 - 1632 Dickson Avenue
Kelowna, BC V1Y 7T2
Phone 866.763.7654
Fax 866.763.9222

Alberta Office
#10 - 50 Bellerose Drive
St. Albert, AB T8N 3L5
Phone 866.763.7654
Fax 866.763.9222

Eastern Office
#8 - 3 Progress Drive
Orillia, ON L3V 6H1
Phone 705.325.7776
Fax 705.325.6299

